

Resourcing community

funding you & me & us & them = Mission and Service Fund 2010

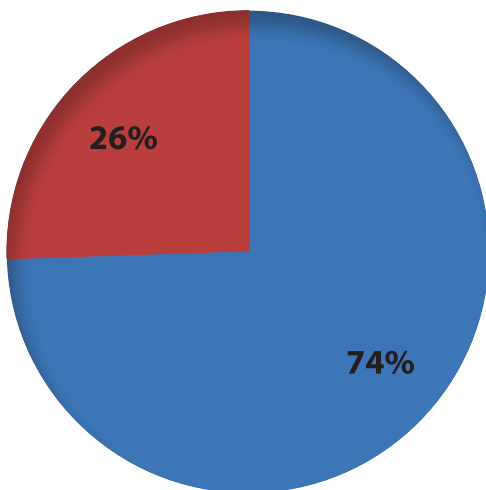
We're a church that's in the business of uniting people. That's why in December of 2009 we launched our public 'Uniting Church. Uniting People.' campaign around the simple '&' symbol.

Why? Because community = you & me & us & them.

It's that simple, and it's that complex.

The Mission and Service Fund is our financial declaration that we're all in this together, that community = you & me & us & them. Through congregational input, income from investments, recovery of some Ministry Centre costs and other income we prove there is greater strength in greater numbers; indeed our financial numbers are better when we work together.

Let's crunch some numbers, to the total budget tune of \$9,141,382, so you can see where your hard earned congregational contributions (totalling \$1,200,000) are being put to use.



you&me = \$1,407,204

- Pastoral Relations (including Ministers' Support)
- Congregation support

you&me

Our Uniting Churches are hubs for mission, safe places for spiritual reflection, homes for fresh expressions of faith, learning centres for discipleship and catalysts for growth. Most of all –they're a place for you & me to engage with the ultimate connector of community – God.

In being you & me, we might occasionally need a pastoral or financial helping hand in hard times. Or our congregational properties might need essential structural work to keep up to code. Or perhaps some financial support for ministers and lay people is required to help make the rural commute to city events.

It's in instances like these that you & I will hear a 'yes' from the Mission and Service Fund.

Keeping you & me resourced comes at a cost though, and in 2010, it's looking to be a total of \$1,407,024.

Breakdown of expenses:

Pastoral Relations (including Ministers' Support)	1,044,888
Congregation support	362,136
Expenditure	\$1,407,024

In being you & me, we might occasionally need a pastoral or financial helping hand in hard times.



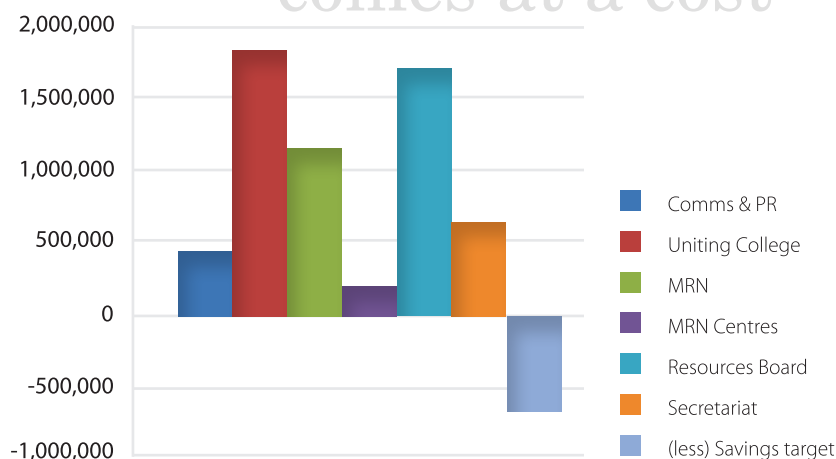
&us

Getting individuals working together comes at a cost – but it's most definitely well worth the cost. By supporting mission initiatives through the Mission Resourcing Network, leadership and theological training by the Uniting College, the administrative and resource management work of the Synod office, children's and youth events, and more, you are able to support the community nurturing at an individual to individual level, right across the state. Cost: \$5,288,408. Results: priceless.

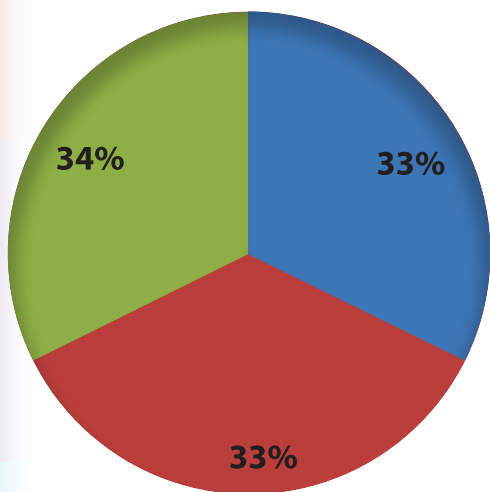
Breakdown of expenses:

Communications and Public Relations	443,233
Uniting College	1,825,536
Mission Resourcing Network	1,162,572
Mission Resourcing Centres	191,935
Resources Board	1,701,710
Secretariat	632,281
Expenditure sub-total	\$5,957,267

Getting individuals working together comes at a cost



&us = \$5,288,408



&them = \$1,482,765

- UnitingCare
- Uniting Aboriginal & Islander Christian Congress (UAICC)
- Wider Church (Assembly & ecumenical support)

Sharing together for stronger networks and life

&them

We greatly value our broader networks like UnitingCare and the Uniting Aboriginal & Islander Christian Congress. These arms help us to participate in mission and service beyond our local neighbourhood.

We're also pleased to support the National Uniting Church Assembly and ecumenical initiatives. These contributions keep us accountable, forward-thinking and encouraged to be a better church – sharing together for stronger networks and life.

To achieve this strategy between our state body and these other important networks, we have budgeted \$1,482,765.

Breakdown of expenses:

UnitingCare	491,510
Uniting Aboriginal & Islander Christian Congress (UAICC)	494,566
Wider Church (Assembly & ecumenical support)	496,689
Expenditure	\$1,482,765

&then some...

There's always the rent, depreciation, interest and insurance costs associated with the kind of territories we tread. In 2010, we're expecting to spend \$963,185 in these 'other' areas.

Yes, 2009 was a tight year financially, and we do anticipate an operating deficit for 2010. But we continue to trust in God and push on with our work. While we budget carefully and plan strategically, we trust that God will provide for us as we participate and move forward in his mission.

We look forward to participating in mission with you again this year.

Warm regards,

Barry Atwell
General Manager, Resources
Uniting Church SA

For more information, go to www.resources.sa.uca.org.au